



# الإعلانات الملاحية العُمانية OMAN NOTICES TO MARINERS

الإصدار الشهري (01/2016) Monthly Edition

28 JANUARY 2016

٢٨ يناير ٢٠١٦

## Content

General Notes and Index of Charts and Publications Affected	1-3
Corrections to Charts	-3-
Oman Temporary & Preliminary N to M and Radio Navigation Warnings	3-5
Corrections to Oman Maritime Book	6-7

## المحتويات

ملاحظات عامة وفهرس الخرائط والمنشورات الملاحية المتأثرة
تعديلات الخرائط
الإعلانات الملاحية العُمانية المؤقتة والدائمة والإنذارات الملاحية اللاسلكية
تعديلات كتاب عمان البحري

Published monthly on behalf of the Ministry of Transport and Communications by Oman National Hydrographic Office

يصدرها شهرياً نيابة عن وزارة النقل والاتصالات المكتب الهيدروغرافي الوطني العُماني

**Bait al Falaj**

**P.O. Box: 113, P.C: 100**

**Muscat - Sultanate of Oman**

**E-mail :**

**[nhooman@omantel.net.om](mailto:nhooman@omantel.net.om)**

**Tel:**

**( + 968 243 120 45 - + 968 243 123 50 )**

**Fax:**

**( + 968 243 124 60 )**

**بيت الفلج**

**ص.ب: ١١٣, الرمز البريدي: ١٠٠**

**مسقط - سلطنة عُمان**

**البريد الإلكتروني:**

**هاتف:**

**فاكس:**

## Oman Monthly Notices to Mariners

## الإعلانات الملاحية العُمانية الشهرية

Available free of charge from the Oman National Hydrographic Office at the above address or from approved agents for the sale of Oman Navigation Charts

متوفرة لدى المكتب الهيدروغرافي الوطني العُماني و يمكن الحصول عليها مجاناً من العنوان أعلاه أو بالاتصال مباشرة مع الوكلاء المعتمدين لتوزيع الخرائط الملاحية العُمانية

**1. General Notes:**

a. These monthly Notices cover Oman Charts (prefixed 'OM') and Oman Nautical Publications (prefixed 'ONP') published by the Oman National Hydrographic Office (ONHO) on behalf of the Ministry of Transport and Communications, which is the Authority responsible for issuing Notices to Mariners. Temporary Notices are suffixed (T). This monthly summary is published in English.

b. Authorities and Individuals are requested to report to the Ministry of Transport and Communications, with a copy to the ONHO, of any new dangers to Navigation, changes or defects in Navigational Aids (lights, buoys, radio signals, etc.) or corrections to charts and publications produced by the ONHO or by other nations. Such information affects the safety of international shipping, so is always of great value. The ONHO will forward corrections to other nation's products to the authorities responsible for them (see the reporting form on page 9).

c. This summary is protected by Sultanate of Oman copyright. However, the Notices herein may be copied and redistributed without permission in the interests of the safety of Navigation.

d. All corrections to Oman charts are listed separately for each chart affected. The small corrections are written after the year of the Oman Notices to Mariners number, e.g., (for OM 1):

**2005// - 4 - 16 - 2006 - 3 -13- 14**

### 3. Omani Charts and Publications affected by this Edition:

<i>Charts</i>	<i>Notice no.</i>	<i>RNO Folios</i>
OM 100	01/16	1-2-3-7-10
OM 302	01/16	1-2-3-7-10
OM 509	02/16	1-2-3-7-8-10

### 4. New Edition of Omani Charts and Publication:

Nil

### 5. New Omani Charts and Publications:

Nil

### 6. Omani charts and Publications permanently withdrawn:

Nil

### 7. Erratum:

Nil

## ii CORRECTIONS TO CHARTS

#### 01/16 ARABIAN GULF - MUSANDAM REGION

Chart OM 100 - KHAWR SAWI

OM 302 - RA'.S KUMZAR TO RA'.S SHAYKH MASUD

Delete



26° 22'.04N, 56° 21'.76E

Chart : OM 100

[Last update: NE 2012]

Chart : OM 302

[Last update: 08/15]

Source : Oman National Hydrographic Office

#### 02/16 ARABIAN GULF - STRAIT REGION

Chart OM 509 - KHAWR AL HABALAYN TO JAZIRAT SALAMAH

Insert ++

26° 27'.99N, 56° 38'.76E

Insert The accompanying block, centred on:

26° 09'.48N, 56° 24'.55E

Chart : OM 509

[Last update: 08/14]

Source : Oman National Hydrographic Office

## iii OMAN TEMPORARY NOTICES TO MARINERS AND RADIO NAVIGATION WARNINGS

### 1. Oman Temporary Notices to Mariners (T)

#### a. Notices in Force

##### *i. Former In Force List*

2013: (Sep)

07 (T) - Sea of Oman - As Suwayq area - OM 1, OM 1215 & OM 3505

1. Vessel "SEA LIGHT" sunk in position: 23° 53'.297N, 57° 22'.922E, depth: 08-10m.

2. A temporary wreck buoy has been deployed to mark the sunken vessel as detailed below:

NN	Region, name and location	Position	Light character	Range	Description
1071.2	As Suwayq wreck buoy	23° 53'.42N 57° 22'.80E	One second of blue light and one second of yellow light with 0.5 seconds of darkness between.	4	Blue/ yellow strips in equal number dimensions.

3. Mariners are requested to navigate with caution in that area.

- 2014: (August)** 01(T) - Arabian Gulf Region - OM100 + OM302 - MNB1 east cardinal mark out of position. The old position was 26°21'.92N, 56°21'.67E.  
02(T) - Sea of Oman - OM257 - Meteorological buoy (NN 1103) out of position. The old position was 24°31'.80N, 56°38'.05E.

**ii. Cancelled Notices**

Nil

**b. Notices Issued During This Month**

Nil

**2. Oman Preliminary Notices to Mariners (P)**

**a. Notices In Force**

**i. Former In Force List**

- 2014: (March)** 01 (P) 14 - Arabian Sea to Khalba - Submarine Cable.  
Source: Tata Gulf Cable System  
**Charts affected - OM 1 - OM 3505 - OM 1215 - OM 1216 - OM 1212 - OM 301**
- 2014: (April)** 02 (P)14 - Bay of Bengal (BBG) Submarine Cable System.  
Source: Fugro OSAE GMBH  
**Charts affected - OM 1 - OM 1214 - OM 1216**
- 2014: (June)** 03(P) 14 - Seawater Intake Structure And Pipe.  
Source: Sembcorp Salalah Power And Water Company SAOC  
**Charts affected - OM 1201**
- 2015: (August)** 01 (P) 15 - Omantel Submarine Cable System.  
SOURCE: OMANTEL  
**Charts affected - OM 1 - OM 101 - OM254 - OM 302 - OM 509 - OM 1214 - OM 1215 - OM 1216 - OM 1218 - OM 1219 - OM 3501 - OM 3505**

**ii. Cancelled Notices**

Nil

**b. Notices Issued During This Month**

Nil

**3. Oman Radio Navigation Warnings**

**a. NAV Warnings in force:**

**i. (In Force List)**

**2013:** 03, 14, 15.

**2014:** 10, 11, 20, 22, 31, 33, 41.

**2015:** 10, 12, 18, 22, 26, 37.

**ii. Cancelled Notices**

Nil

**b. Oman NAV Warnings issued during this month:**

**01/16** SEA OF OMAN

CHART NO. OM 250, OM 1200 & OM 1201.

1. SALALAH METHANOL WATER INTAKE BUOY (NN 0190) OUT FROM CHARTED POSITION. THE OLD POSITION OF THE BUOY WAS 16°55'.61N, 053°59'.60E.

**02/16** SEA OF OMAN  
CHART NO. OM 1208, BA 2854.

1. OMANTEL BUOY NO.1 IN POSITION 20°39'.58N 58°51'.72E UNLIT.

**03/16** SEA OF OMAN  
CHART NO. BA 2854.

1. OMANTEL BUOY NO.2 IN POSITION 20°39'.46N 58°51'.89E COMPLETELY DAMAGED MARINERS ARE ADVISED TO NAVIGATE WITH CAUTION IN THAT AREA.

#### **4. RNO Navigations Warnings**

##### **a. Warnings in force:**

###### ***i. (In Force List)***

2015: 02, 06.

###### ***ii. Cancelled Notices***

04.

##### **b. RNO NAV Warnings issued during this month:**

Nil

#### **5. NAVAREA IX Warnings (between 55°E and 64°E)**

##### **a. Warnings in force:**

###### ***i. (In Force List)***

Nil

###### ***ii. Cancelled Notices***

Nil

##### **b. NAVAREA IX Warnings (between 55°E and 64°E) issued during this month:**

Nil

**1. Section One: Tide Tables**

Nil

**2. Sections Two: List of Radio Signals**

**SULTANATE OF OMAN سلطنة عُمان (page2-20)**

**a. Insert:**

**0470 – 76270** Lt Racon **AD DUQM PORT ميناء الدقم** 19°42'.70N 57°48'.95E.

**1002 – 76415** Lt Racon **BAIT AL BARAKAH MARINA مرسى بيت البركه** 23°43'.00N 58°05'.50E.

*\*Details as per attached page*

**Source:** Oman National Hydrographic Office

**3. Section Three: National List of Lights**

**SALALAH REGION**

**(PORT OF SALALAH (page3-7)**

**a. Light No. 0202:**

Amend Description of Structure Height and Remarks to be read : **Green painted steel beacon 3.5m.**

**b. Light No. 0202.1:**

Amend Description of Structure Height and Remarks to be read : **Red painted steel beacon 3.5m.**

**MASIRAH REGION**

**SHANNA HARBOUR (page3-20)**

**a. Light No. 0550:**

Amend Description of Structure Height and Remarks to be read : **White painted steel beacon 2.5m.**

**SOHAR REGION**

**SOHAR FISHERY HARBOUR (page3-41)**

**a. Light No. 1102:**

Amend Description of Structure Height and Remarks to be read : **Red painted steel beacon 2m.**

**SOHAR FISHERY HARBOUR (page3-42)**

**a. Light No. 1105:**

Amend Description of Structure Height and Remarks to be read : **Red painted steel beacon 2m.**

**STRAIT REGION**

**DABA AL BAYAH FISHERY HARBOUR (page3-53)**

**a. Light No. 1202:**

Amend Description of Structure Height and Remarks to be read : **Red painted steel beacon 3.5m.**

**b. Light No. 1204:**

Amend Description of Structure Height and Remarks to be read : **Green painted steel beacon 3.5m.**

**KHAWR KIMZAR (page3-54)**

**a. Light No. 1220:**

Amend Description of Structure Height and Remarks to be read : **Red painted steel beacon 2m.**

**b. Light No. 1222:**

Amend Description of Structure Height and Remarks to be read : **Green painted steel beacon 2m.**

**ARABIAN GULF REGION**

**KHASAB PORT (page3-57)**

**a. Light No. 1310:**

Amend Description of Structure Height and Remarks to be read : **Green painted steel beacon 2m.**

**b. Light No. 1312:**

Amend Description of Structure Height and Remarks to be read : **Red painted steel beacon 2m.**

**Source:** Arabian Maritime and Navigation Aids Services (AMNAS)

## **ARABIAN GULF REGION**

### **KHASAB PORT (page3-56)**

#### **a. Light No. 1306:**

Delete light in position: 26° 22'.04N, 56° 21'.76E

*\*Details as per attached page*

**Source:** Oman National Hydrographic Office

## **4. Section Four: National List of Wrecks**

### **STRAIT REGION**

#### **STRAIT REGION (page4-18)**

#### **a. Wreck No. 120650:**

Insert new wreck in position: 26° 27.99'N, 56° 38.76'E

*\*Details as per attached page*

**Source:** Oman National Hydrographic Office

## **5. Section Five: Oman Navigational Charts**

Nil

***Intentionally left blank***



**HYDROGRAPHIC NOTE**

( see instructions next page )

Date: .....

Ref. No. ....

---

Name of sender: .....

Address of sender: .....

.....

Tel/Fax/Telex No. / e--mail address of sender (if appropriate): .....

General locality: .....

Subject: .....

.....

Position. Lat: .....

Long: .....

Oman Charts affected: .....

Edition dated: .....

Position fixing system used: .....

Datum set: .....

Latest Weekly Edition of Notice to Mariners held: .....

.....

Publications affected (Edition No . . . . . date of latest supplement, page and Light List No. etc.)

.....

.....

.....

Details:

Signature of observer / reporter: .....

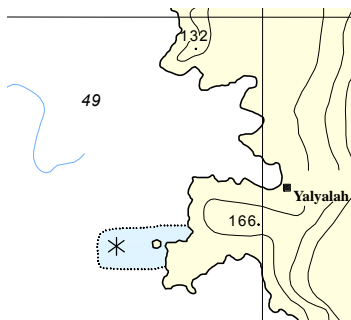
## **HYDROGRAPHIC NOTE**

(Forwarding information for Omani Charts and Publications.)

### INSTRUCTIONS:-

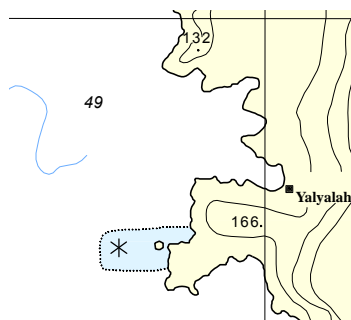
1. Mariners are requested to notify the Oman National Hydrographic Office, (address in page 1), when new or suspected dangers to navigation are discovered, changes observed in Aids to Navigation, or corrections to publications are seen to be necessary.
2. This form and its instructions have been designed to help both the sender and the recipient. It should be used, or followed closely, whenever appropriate.
3. Paper Charts: A copy or a cutting from the largest scale chart is the best medium for forwarding details, the alterations and additions being shown thereon in red. When requested, a new copy will be sent in replacement of a chart that has been used to forward information.

*To accompany Notice to Mariners 02/16*



Block for Chart No. OM509

*To accompany Notice to Mariners 02/16*



Block for Chart No. OM509



الإعلانات الملاحية العمانية (ملحق)  
**OMAN NOTICES TO MARINERS (attachment)**  
Monthly Edition (01/ 2016) الإصدار الشهري  
28 JANUARY 2016 ٢٨ يناير ٢٠١٦ م

**2. Section Two: List of Radio Signals**

**SULTANATE OF OMAN - سلطنة عُمان**

<b>0470 – 76270</b>	Lt Racon	<b>AD DUQM PORT</b>	ميناء الدقم	19°42'.70N	57°48'.95E
		(3 & 10 cm) 360°	25 NM	<b>A</b>	
<b>1002 – 76415</b>	Lt Racon	<b>BAIT AL BARAKAH MARINA</b>	مرسى بيت البركة	23°43'.00N	58°05'.50E
		(3 & 10 cm) 360°	25 NM	<b>M</b>	

**Insert Page (2-20)**



الإعلانات الملاحية العمانية (ملحق)  
OMAN NOTICES TO MARINERS (attachment)  
Monthly Edition (01/ 2016) الإصدار الشهري  
28 JANUARY 2016 ٢٨ يناير ٢٠١٦م

**3. Section Three: National List of Lights**

**SALALAH REGION - منطقة صلالة**

**PORT OF SALALAH**

ميناء صلالة

National & Int. No.	Region, name & location	Position Lat <sup>o</sup> N Long <sup>o</sup> E	Light Character	Height (metres)	Range (Miles)	Description of Structure Height and Remarks
0202	Port Salalah Container berth No.6	16 57.06 54 01.16	Iso G 4s	6.5	2 (day)ocas 3 (night)	Green painted steel beacon 3.5m
0202.1	Port Salalah berth 23/24	16 56.40 54 00.37	F1 R 5s	6.5	2 (day)ocas 3 (night)	Red painted steel beacon 3.5m

**Page (3-7)**



الإعلانات الملاحية العمانية (ملحق)  
**OMAN NOTICES TO MARINERS (attachment)**  
Monthly Edition (01/ 2016) الإصدار الشهري  
28 JANUARY 2016 ٢٨ يناير ٢٠١٦م

**3. Section Three: National List of Lights**

**MASIRAH REGION - منطقة مصيرة**

National & Int. No.	Region, name & location	Position Lat <sup>o'</sup> N Long <sup>o'</sup> E	Light Character	Height (metres)	Range (Miles)	Description of Structure Height and Remarks
0550	Shanna harbour	20 44.52 58 44.88	Fl(2)W 6s	7.5	5	White painted steel beacon 2.5m



الإعلانات الملاحية العمانية (ملحق)

OMAN NOTICES TO MARINERS (attachment)

Monthly Edition (01/ 2016) الإصدار الشهري  
28 JANUARY 2016 ٢٨ يناير ٢٠١٦م

**3. Section Three: National List of Lights**

**MASIRAH REGION - منطقة مصيرة**

**SOHAR FISHERY HARBOUR**

**ميناء الصيد البحري بصحار**

National & Int. No.	Region, name & location	Position Lat <sup>o</sup> N Long <sup>o</sup> E	Light Character	Height (metres)	Range (Miles)	Description of Structure Height and Remarks
1102	Majis " T " jetty head	24 29.17 56 38.69	Iso R 4s	5	3	Red Painted steel beacon 2m

**Page (3-41)**



الإعلانات الملاحية العمانية (ملحق)

OMAN NOTICES TO MARINERS (attachment)

Monthly Edition (01/ 2016) الإصدار الشهري  
28 JANUARY 2016 ٢٨ يناير ٢٠١٦ م

**3. Section Three: National List of Lights**

**منطقة مصيرة - MASIRAH REGION**

**SOHAR FISHERY HARBOUR**

**ميناء الصيد البحري بصحار**

National & Int. No.	Region, name & location	Position Lat <sup>o</sup> N Long <sup>o</sup> E	Light Character	Height (metres)	Range (Miles)	Description of Structure Height and Remarks
1105	Majis P 'S' main breakwater head	24 28.94 56 38.52	Q(3)R 10s	3.5	3	Red Painted steel beacon 2m

**Page (3-42)**





الإعلانات الملاحية العمانية (ملحق)  
**OMAN NOTICES TO MARINERS (attachment)**  
Monthly Edition (01/ 2016) الإصدار الشهري  
28 JANUARY 2016 ٢٨ يناير ٢٠١٦ م

**3. Section Three: National List of Lights**

**STRAIT REGION - منطقة المضيق**

**DABA AL-BAYAH FISHERY HARBOUR**

**ميناء الصيد البحري بدبا البيعة**

National & Int. No.	Region, name & location	Position Lat <sup>o'</sup> N Long <sup>o'</sup> E	Light Character	Height (metres)	Range (Miles)	Description of Structure Height and Remarks
1202 D 7334.7	Daba Al Bayah main breakwater head	25 39.10 56 16.30	Fl R 5s	6.8	5	Red painted steel beacon 3.5m
1204 D7334.75	Daba Al Bayah inner breakwater head	25 39.10 56 16.20	Fl G 5s	6.3	4	Green painted steel beacon 3.5m



الإعلانات الملاحية العمانية (ملحق)  
**OMAN NOTICES TO MARINERS (attachment)**  
Monthly Edition (01/ 2016) الإصدار الشهري  
28 JANUARY 2016 ٢٨ يناير ٢٠١٦ م

**3. Section Three: National List of Lights**

**STRAIT REGION - منطقة المضيق**

**KHAWR KIMZAR**

**خور كمزار**

National & Int. No.	Region, name & location	Position Lat <sup>o'</sup> N Long <sup>o'</sup> E	Light Character	Height (metres)	Range (Miles)	Description of Structure Height and Remarks
1220	Khawr Kimzar main breakwater head	26 20.51 56 25.09	Fl(3)R 15s	4	3	Red painted steel beacon 2m
1222	Khawr Kimzar inner breakwater head	26 20.47 56 25.09	LFl G 15s	4	3	Green painted steel beacon 2m



الإعلانات الملاحية العمانية (ملحق)  
**OMAN NOTICES TO MARINERS (attachment)**  
Monthly Edition (01/ 2016) الإصدار الشهري  
28 JANUARY 2016 ٢٨ يناير ٢٠١٦ م

**3. Section Three: National List of Lights**

**STRAIT REGION - منطقة المضيق**

**KHAWR KIMZAR**

**خور كمزار**

National & Int. No.	Region, name & location	Position Lat <sup>o'</sup> N Long <sup>o'</sup> E	Light Character	Height (metres)	Range (Miles)	Description of Structure Height and Remarks
1310 D 7336.2	Mina Khasab main breakwater head	26 12.64 56 15.01	Fl G 5s	-	3	Green painted steel beacon 2m
1312 D7336.25	Mina Khasab East breakwater head	26 12.49 56 15.09	Fl R 5s	-	3	Red painted steel beacon 2m

**Page (3-57)**



الإعلانات الملاحية العمانية (ملحق)  
OMAN NOTICES TO MARINERS (attachment)  
Monthly Edition (01/ 2016) الإصدار الشهري  
28 JANUARY 2016 ٢٨ يناير ٢٠١٦م

**3. Section Three: National List of Lights**

**ARABIAN GULF REGION - منطقة الخليج العربي**

**JAZIRAT UMM AL GHANAM / MUSANDAM NAVAL BASE (MNB)**

جزيرة أم الغنم - قاعدة مسندم البحرية

National & Int. No.	Region, name & location	Position Lat <sup>o'</sup> N Long <sup>o'</sup> E	Light Character	Height (metres)	Range (Miles)	Description of Structure Height and Remarks
1306	MNB South cardinal mark	26 22.04	Q(6)	3	3	
D-7340.2		56 21.76				



الإعلانات الملاحية العمانية (ملحق)  
**OMAN NOTICES TO MARINERS (attachment)**  
Monthly Edition (01/ 2016) الإصدار الشهري  
28 JANUARY 2016 ٢٨ يناير ٢٠١٦م

**4. Section Four: National List of Wrecks**


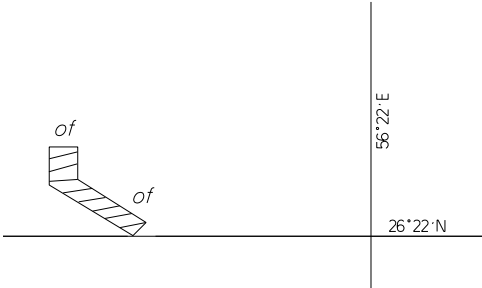
**STRAIT REGION - منطقة المضيق**


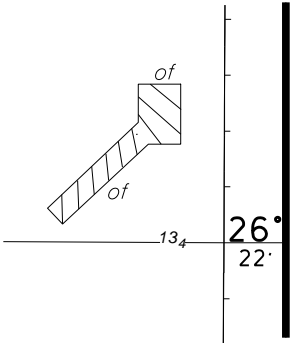
**STRAIT REGION**


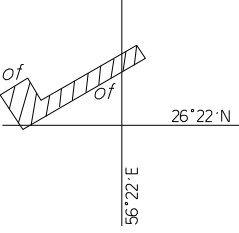
**منطقة المضيق**


National & UK No.	Position Lat ° N Long ° E	Type	Name (Nationality)	Date Sank	length x beam x draught Gross Tonnage	Least (General) Depth	Date of Last Report and Remarks
120650	26 27.99	-	-	-	-	90	23 Febrouary 1999
57229	56 38.76						

**Insert Page (4-18)**

<b>Monthly Edition</b>	<b>Oman N to M</b> 01/16					<b>Chart</b>			<b>1 Of 2</b>
01/16	Previous correction -					Edition	08/12	No	
						<del>NE</del> / NE		OM 100	
									

<b>Monthly Edition</b>	<b>Oman N to M</b> 01/16					<b>Chart</b>			<b>2 Of 2</b>
01/16	Previous correction -					Edition	08/12	No	
						<del>NE</del> / NE		OM 100	
<p><b>(Plan)</b></p> 									

<b>Monthly Edition</b>	<b>Oman N to M</b> 02/16					<b>Chart</b>		
01/16	Previous correction 08/15					Edition	01/05	No
						NC / <del>NE</del>		OM 302
								

<b>Monthly Edition</b>	<b>Oman N to M</b> 02/16					<b>Chart</b>		
01/16	Previous correction 08/14					Edition	12/05	No
						NC / <del>NE</del>		OM 509+Block
